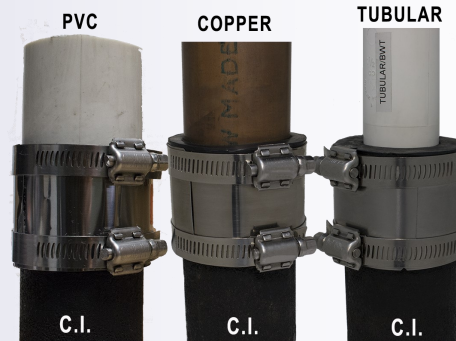


# Specialty Transition Couplings



## Dallas Specialty's Specialty Transition Couplings:

- Used for joining a variety of pipes and sizing situations
- Resists shear conditions while maintaining alignment



- Easy assembly, disassembly and reusable.
- Creating a long lasting joint installation.
- Above ground installation for Cast Iron, XH Cast Iron, Plastic, Steel and Copper pipes



300 Series All Stainless Adjustable Band

## Gasket

- Neoprene Rubber
- ASTM C-564 / C-1460
- Meeting material requirements of: IPC/IRC
- Meets CISPI 310
- UPC listed

## Clamp & Shield

- 300 Series Stainless Steel
- 5/16" Hex Head Screw
- 60# Torque
- Heavy Duty Shield .012 Stainless Steel

## CKX SERIES FITS: CAST IRON, PLASTIC OR STEEL x COPPER PIPE

Part No.	Description	Size
DSCKX1125	1-1/2" CI/PL/ST x 1-1/4" COPPER	1.91" x 1.35"
DSCKX115	1-1/2" CI/PL/ST x 1-1/2" COPPER	1.95 x 1.65"
DSCKX2125	2" CI/PL/ST x 1-1/4" COPPER	2.41 x 1.35"
DSCKX215	2" CI/PL/ST x 1-1/2" COPPER	2.41" x 1.65"
DSCKX22	2" CI/PL/ST x 2" COPPER	2.32" x 2.08"
DSCKX32	3" CI/PL/ST x 2" COPPER	3.50" x 2.11"
DSCKX33	3" CI/PL/ST x 3" COPPER	3.50" x 3.125"
DSCKX43	4" CI/PL/ST/XHCI x 3" COPPER	4.44" x 3.07"
DSCKX44	4" CI/PL/XHCI x 4" COPPER	4.44" x 4.07"

## TX SERIES FITS: CAST IRON OR PLASTIC x TUBULAR

Part No.	Description	Size
DSTX150/125	1-1/2" CI/PL/ST x 1-1/4" TUBULAR	1.90" x 1.65"
DSTX150	1-1/2" CI/PVC x 1-1/2" TUBULAR	1.90" x 1.50"
DSTX215	2" CI/PVC x 1-1/2" TUBULAR	2.35" x 1.50"

## KX SERIES FITS: COPPER x COPPER PIPE

Part No.	Description	Size
DSKX1125	1-1/4" COPPER X 1-1/4" COPPER	1.625" x 1.35"
DSKX150	1-1/2" COPPER X 1-1/2" COPPER	1.625" x 1.625"
DSKX200	2" COPPER X 2" COPPER	2.125" x 2.125"
DSKX300	3" COPPER X 3" COPPER	3.13" x 3.13"
DSKX32	3" COPPER X 2" COPPER	3.13" x 2.63"

## KCX SERIES FITS: COPPER x CI OR PLASTIC

Part No.	Description	Size
DSKCX215	2" COPPER X 1-1/2" CI OR PLASTIC	2.125" x 1.95"

## KTX SERIES FITS: COPPER x TUBULAR PIPE

Part No.	Description	Size
DSKTX150	1-1/2" COPPER x 1-1/2" TUBULAR	1.625" x 1.50"
DSKTX215	2" COPPER x 1-1/2" TUBULAR	2.125" x 1.50"

## CPX SERIES FITS: CAST IRON x PVC, STEEL or XHCI

Part No.	Description	Size
DSCPX150	1-1/2" CI x 1-1/2" PL, ST or XHCI	1.95" x 1.95"
DSCPX200	2" CI x 2" PL, ST or XHCI	2.34" x 2.34"
DSCPX2125	2" CI x 1-1/4" PL, ST or XHCI	2.40" x 1.65"
DSCPX215	2" CI x 1-1/2" PL, ST or XHCI	2.40" x 1.93"
DSCPX32	3" CI x 2" PL, ST or XHCI	3.37" x 2.34"
DSCPX33	3" CI x 3" PL, ST or XHCI	3.37" x 3.52"
DSCPX43	4" CI x 3" PL, ST or XHCI	4.46" x 3.46"
DSCPX44	4" CI x 4" PL, ST or XHCI	4.44" x 4.36"
DSCPX55	5" CI x 5" PL, ST or XHCI	5.00" x 5.18"
DSCPX66	6" CI x 6" PL, ST or XHCI	6.52" x 6.15"
DSCPX88	8" CI x 8" PL, ST or XHCI	8.50" x 8.31"

## PX SERIES FITS: PLASTIC x PLASTIC

Part No.	Description	Size
DSPX150	1-1/2" PLASTIC x 1-1/2" PLASTIC	1.95" x 1.95"
DSPX150/125	1-1/2" PLASTIC x 1-1/4" PLASTIC	1.95" x 1.65"
DSPX200	2" PLASTIC x 2" PLASTIC	2.34" x 2.34"
DSPX33	3" PLASTIC x 3" PLASTIC	3.50" x 3.50"
DSPX43	4" PLASTIC x 3" PLASTIC	4.44" x 3.50"
DSPX44	4" PLASTIC x 4" PLASTIC	4.44" x 4.44"
DSPX66	6" PLASTIC x 6" PLASTIC	6.60" x 6.60"
DSPX88	8" PLASTIC x 8" PLASTIC	

## PKX SERIES FITS: PLASTIC, ST, XHCI x COPPER

Part No.	Description	Size
DSPKX33	3" PLASTIC, ST OR XHCI x 3" COPPER	3.50" x 3.125"

Additional sizes may be available, please contact us at 80-222-5644