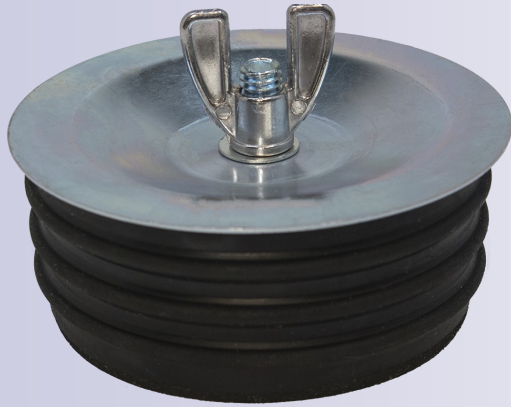


# Metal Wing Nut Test Plugs



## Dallas Specialty's Mechanical Test Plugs

- Designed for use in PVC/DWV pipe
- Purpose is for pressure testing pipe
- Rubber gasket provides tight seal
- Zinc Nut is rust & corrosion resistant
- Wing nut makes for easy installation & removal
- Test Plug will not rust or corrode

- 1-1/2" - 6" max pressure Water 40' / Air 5 PSIG

Part #	Fits ID pipe	Case Qty	Unexpanded OD
DS50-010	1-1/2"	36	1.50"
DS50-020	2"	36	1.75"
DS50-030	3"	36	2.75"
DS50-040	4"	36	3.75"
DS50-050	5"	1	4.75"
DS50-060	6"	1	5.75"
Part #	Fits ID Pipe	Case Qty	Unexpanded OD
DS50-080	8"	1	7.50"
DS50-100	10"	1	9.50"
DS50-120	12"	1	11.50"
DS50-150	15"	1	14.50"
DS50-160	16"	1	15.50"
DS50-210	21"	1	20.50"



Hollow pipe stem can be used for filling or draining a pipe. As the wing nut is turned it expands the rubber ring against the inside of the pipe providing a tight seal. Hand tightening is adequate on smaller sizes. A wrench is recommended on the larger sizes for the best seal.



**DALLAS SPECIALTY & MFG. CO.**

1161 RUGGLES ST GRAND PRAIRIE, TX 75050

972-641-8444 \* 1-800-222-5644 \* fax 972-641-8488

[www.dallasspecialty.com](http://www.dallasspecialty.com)